

Summary of Catch up support Autumn Term 2021

Description

Catch up funding has been allocated to schools on a per pupil basis. Schools should use this funding for specific activities to support their pupils' education recovery in line with the curriculum expectations.

Schools can use their funding in a way that suits their cohort and circumstances. They are expected to use this funding for specific activities which will help pupils catch up on missed learning. Schools should particularly focus on disadvantaged and vulnerable pupils as we know they have been most affected.

LEAP Approach

At LEAP, we will follow three main areas in our approach to supporting children:

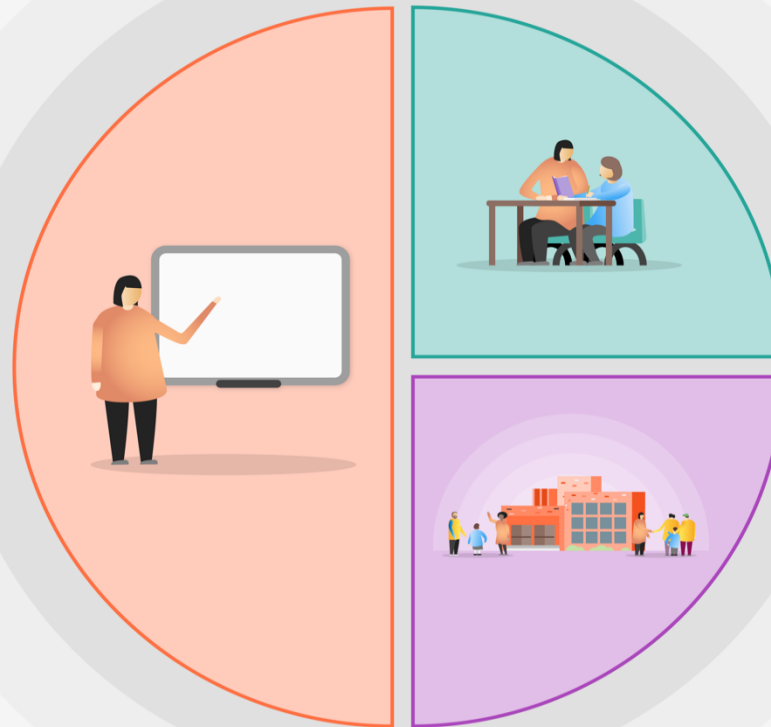
1. High-quality teaching
2. Targeted academic support
3. Wider strategies

Allocation of Funding

	Total	2020 - 21	2021 - 22
Gayhurst	£41,520	£24,220	£17,300

1 Teaching

- Quality First Teaching
- A broad and engaging curriculum
- Formative Assessment to inform planning and teaching
- Systematic approach to the teaching of Reading
- Wide opportunity for Writing
- Reasoning and application approach to embedding the key skills in Maths
- Evidence of the quality teaching of key skills across the curriculum



2 Targeted academic support

- Same- day in class intervention
- Teacher- led targeted group support
- Intervention programmes led by Teacher and Teaching Assistants

3 Wider strategies

- Extended school provision: Breakfast Clubs and sport after school
- Pastoral support: Learning Mentor intervention
- Attendance support
- Staff well-being committee
- FSM provision
- Working with outside agencies (Young Hackney, Kids Network)

Support: Gayhurst

Focus		Description	Year groups	No. of children	Additional resource
Targeted academic support	Reading	DSR and Phonics support 1:1 Reading support Paired Reading After school/ before school Reading tutoring Reading Comprehension Focus – language for thinking Jump into Reading Project AR club	R- Y4 Y1 – Y3 Y5 Y1-6 Y3 and 4 Y5 Y2-6	225 14 2 43 12 10 48	CTs, Tas, S&L, Learning mentors, Therapist, HT, HLTA, LM, TAPP, Academic Mentor
	Writing	Writing Groups with English Lead Targeted Handwriting Groups After-school writing groups After-school writing groups Additional Groups AccelerRead/AccelerWrite Nessy fingers	Y1 & 2 Y1 – Y4 Y3-4 Y5-6 Y5-6 Y5-6 Y4-6	54 20 27 21 150 5 4	CT, TA, English Lead, T& L associates, Academic Mentor
	Maths	Additional Groups After school/ before school Maths tutoring Targeted Maths teaching	Y1 – Y6 Y2-3 Y4	450 25 12	CT, TA, LM, Additional CT, Math tutor, Academic Mentor
Wider strategies	Physical	Gymnastics Daily Mile After school sports clubs Cycling Sporting team competitions	Y1-Y6 Y1- Y6 Y1-6 Y4-6 Y5-6	450 All 60 35 50	CT, TA TGI TA TGI
	Well-being	Attention and Social Skills Groups Speech and Language support Social group: Gardening Emotional behaviour support Cookery Lessons Forest School Emotional Literacy support Eco Active Transition Groups Fundraising Project Breakfast clubs Music tuition Mentoring Aspirations Zones of Regulation Circle of friends School council Looking for Learning Group Food shop	R and Y1 R and Y3 Y1 Y1-6 Y3 Y5 Reception Y4 Y5 Y6 Y6 Y1-6 Y3-6 Y5-6 N and R N-Y6 Y3-6 Y1-6 Y1-6 N-Y6	26 3 20 20 36 75 4 TBC 72 72 TBC 26 9 5 All 30 30 18 TBC	S&L Therapist, TA, LM Chef SoF EYFS Lead TA, CT Music TA The Kids Network Nursery officer AH AH TAs